

### **Hydraulic Valve Assemblies**

- **Low Power** - Under 1.5W continuous power
- **Compact** - Modular system design
- **High System Flow** - 15 l/min
- **316L Stainless Steel** solenoid enclosure and valve body .
- **Fully Configurable**
- **NACE MR-01-75** internal wetted and body materials (option)
- **High Pressure** - Up to 690 bar system working pressure
- **Lowest Cost Solution** - Compact footprint
- **Seated Ball design** offers extremely low leakage



## Overview

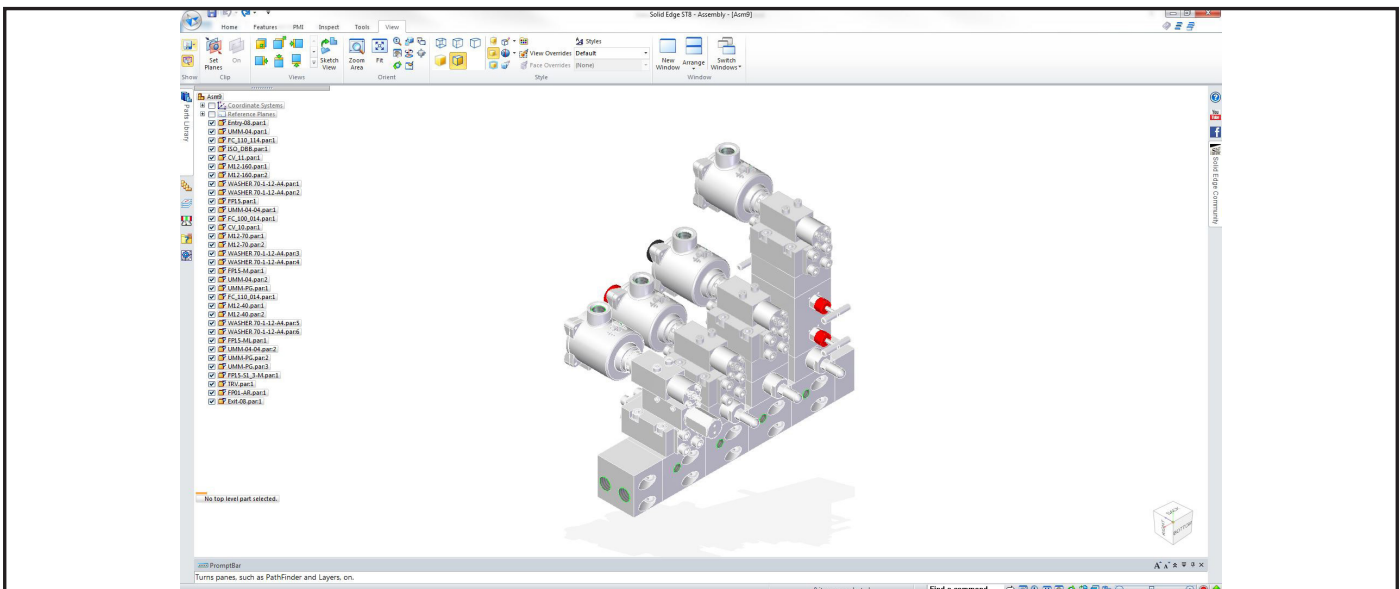
Bifold are constantly carrying out vigorous research and development on all products and internal processes, ensuring that our products and services provide peace of mind to contractors, installers and end users.

Bifold have developed an internal application that seamlessly designs a bespoke hydraulic modular manifold within minutes. Using a drag and drop system, users\* can select the required schematic from the schematic panel and drop it into the customer specified circuit. The completed assembly which is built in real time can then be viewed as a Solid Edge assembly as well as the 2D Solid Edge draft. This tool also adds the newly created assembly to the (MRP) manufacturing system ready to order.

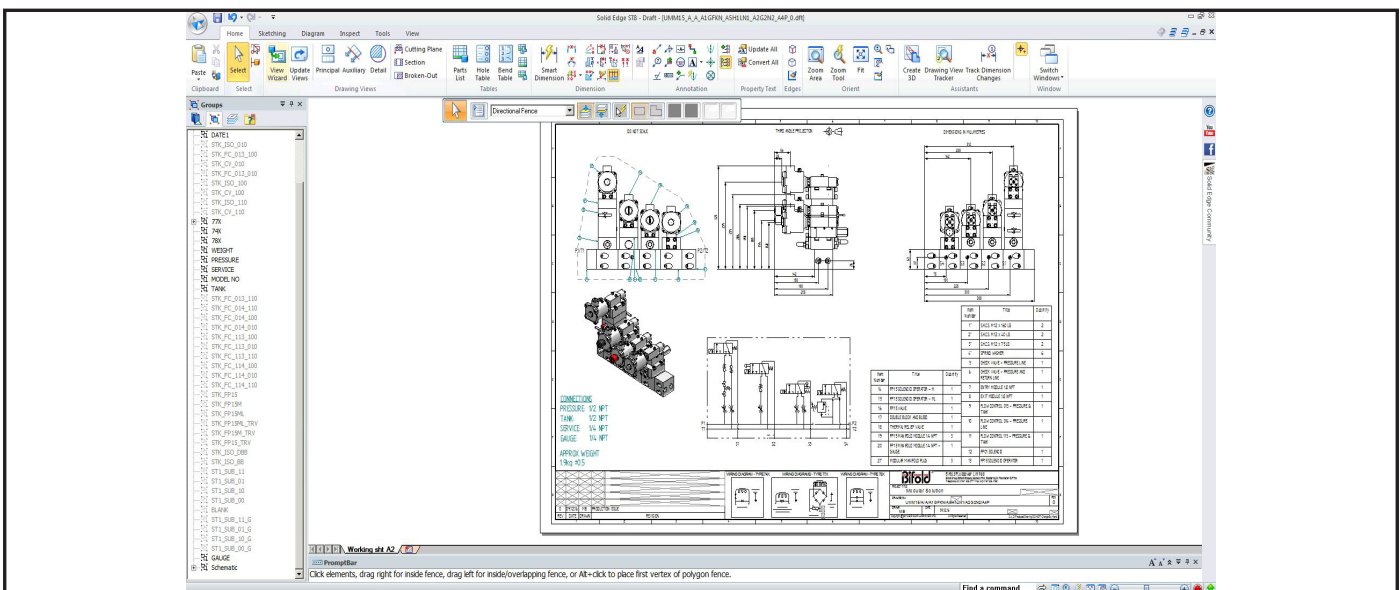
\*The modular manifold designer, will soon be made available for customers.

- Design a bespoke modular system.
- Valves in any order or orientation using schematic drag and drop system.
- Modular manifold is built in real-time.
- The designed circuit can then be ordered direct from Bifold.

## 3D Solid Edge Assembly



## 2D Solid Edge Draft



**Accuracy of information**  
We take care to ensure that product information in this catalogue is reasonably accurate and up-to-date. However, our products are continually developed and updated so to ensure accurate and up-to-date information please refer to the product catalogue issue list on our web site or contact a member of our sales team.

When selecting a product, the applicable operating system design must be considered to ensure safe use. The products function, material compatibility, adequate ratings, correct installation, operation and maintenance are the responsibilities of the system designer and user.

**Quality Assurance**  
All Bifold products are manufactured to a most stringent QA programme to ensure that every product will give optimum performance and reliability. We are third party certified to EN ISO 9001:2008. Functional test certificate, letter of conformity and copies of original mill certificates, providing total traceability are available on request, to BS EN 10204.3.1.B where available. We reserve the right to make changes to the specifications and design etc., without prior notice.